



High-Volume Portable Label Printer ■ ■ ■

features at a glance ■ ■ ■

- **Greater media capacity** with almost twice the capacity of any printer in its class
- **Longer battery life** with two standard 7.2V Lithium-ion rechargeable batteries
- **Ergonomic design** allows the storefront workers to carry the printer or fit it easily in a shopping cart
- **Quick and easy media loading:** simply slide the roll into the printer, pop on the end-cap, and you're ready to go
- **Label presenter** for quick and easy peel-and-apply
- **Complete line of certified supplies** ensures optimum, trouble-free performance, and guarantees the highest quality output and image stability

your benefits ■ ■ ■

- **Increased productivity** - The LP3 offers greater media capacity and batter power which will decrease downtime and increase worker's efficiency.
- **Reliable performance** - In today's tough economy, you can't afford to buy printers that fail. The LP3 comes with Datamax-O'Neil's legendary reliability ensuring that your operation will run smoothly.

LP3 is a 3" direct thermal portable label printer that delivers great paper capacity, long battery life and a range of wireless connectivity options for the retail and manufacturing marketplace. And of course, the reliability Datamax-O'Neil is known for around the globe.

The retail floor is no place for downtime. Constantly reloading supplies or getting a flashing low battery light in the middle of a markdown is simply unacceptable.

The LP3 offers almost twice the media capacity and twice the power capacity when compared to other printers on the market. And with its fast and easy side-loading design, this means fewer interruptions and increased productivity on the floor.

The LP3 prints 1" to 3" labels and can accommodate a wide variety of labels and paper including the heavy stock necessary for hang tags and specialty label needs.



accessories ■ ■ ■

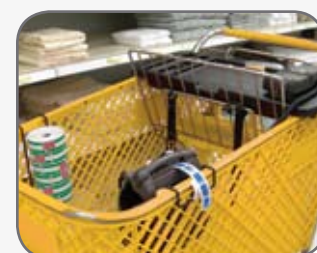
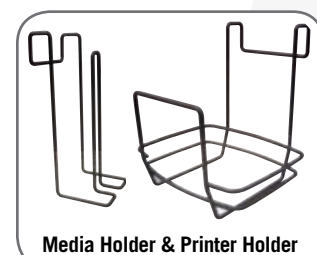
included with each LP3 printer: (2) batteries, (1) carrying strap, and (1) roll of media

required ■ ■ ■

AC Adapter	AC Adapter available with US, UK, Australia, or Euro plugs
Cigarette Lighter Adapter	Allows you to charge the printer from the vehicle cigarette lighter
DB9 F Serial / Configuration Cable	DB9 F coiled right angle cable for connecting to a laptop or desktop computer
Cleaning Cards & Kits	Use of cleaning cards is recommended to extend the life of the printhead (visit www.datamax-oneil.com/supplies)

optional ■ ■ ■

Serial Cables for Mobile Computers	DB9 F coiled right angle download cables are compatible with a variety of popular mobile computers; see price list for a specific model compatibility and part number
Shopping Cart Tray	Fits snugly on a shopping cart with lots of work room for the LP3 printer, labels, scanner, etc
Wire Form Media Holder	Metal bracket holds rolls of media when hung from a shopping cart
Wire Form Printer Holder	Metal bracket cradles the LP3 when hung from a shopping cart
Shoulder Strap Kit	Allows you to carry the LP3 over your shoulder for optimum mobility
Spare Battery	Lithium-Ion, 7.2V, 2200mAh
Double Bay Battery Charger	2-bay battery charger keeps additional batteries charged and ready for use



product specifications ■ ■ ■

physical characteristic ■ ■ ■

- Dimensions:
 - 7.86" H x 6.2" W x 5.17" D
(199.6mm H x 157.5mm W x 131.3mm D)
- Weight:
 - Printer only: 39.9 oz (1.13 kg)
 - With batteries & paper roll: 63.5 oz (1.8 kg)
- Drop specification:
 - 4 ft. (1.22 m)

user environment ■ ■ ■

- Operating temperature:
 - 4° F to 113° F (0° C to 45° C)
- Storage temperature:
 - 40° F to 158° F (-40° C to 70° C)
- Charging temperature:
 - 41° F to 104° F (5° C to 40° C)
- Relative humidity:
 - 10% to 90% non-condensing
- ESD protection:
 - 8 kV Air, 4 kV contact

print technology ■ ■ ■

- Printhead:
 - Direct thermal
 - 203 dots per inch (8 dots per mm)
- Print width:
 - 2.84" (72.1mm)
- Print mechanism speed:
 - 2" per second (51mm per second)

power source ■ ■ ■

- Batteries:
 - (2) 7.2V Lithium-ion (Li-ion), 2200 mAh (for a total of 4400 mAh)
- DC Inputs (for charging only):
 - 12-15V, built-in spike and surge protection
- Endurance:
 - 802.11b/g: prints approx. 8,760 – 2" x 1.125" labels on a single battery charge (36.5 hours)
 - Bluetooth: prints approx. 13,392 – 2" x 1.125" labels on a single battery charge (55.8 hours)
- Recharging:
 - 4 - 5 hours from AC adapter or cigarette adapter

communication ■ ■ ■

- Serial:
 - RS-232; up to 460.8 kbps
- USB:
 - 2.0 (full speed)
- 802.11 b/g:
 - Frequency band: 2.4 to 2.4897 GHz
 - Data rates: Standard 802.11b/g rates
 - Network standard: IEEE 802.11b/g
 - Wireless access modes: Infrastructure and ad hoc
 - Security protocols:

	WPA	WPA2
Modes	PSK/Enterprise	
Security/Encryption	TKIP/RC4	CCMP/AES
Authentication	EAP-FAST, EAP-PEAP, EAP-TTLS	

- Network support: DHCP, TCP, UDP, BOOTP
- Remote management support: Compatible with the Remote Management Software and other remote management systems
- Bluetooth:
 - Network environment: Ad hoc or piconet
 - Supported versions: v1.2 (compatible with v1.1 devices)

media ■ ■ ■

- Type:
 - Labels: 0.75" - 3.0" (19mm - 76.2mm) lined labels w/ Q-mark or gap sensing
 - Synthetic media, UV coated media
 - 2" hang tags
- Maximum roll capacity:
 - 3.5" (88.9mm) O.D.; 1.0" (25.4mm) I.D. core
- Roll width:
 - 1.0" - 3.0" (25.4mm - 76.2mm)
- Thickness:
 - 0.002" (0.05mm) minimum
 - 0.007" (0.18mm) maximum
- For optimum print quality and printer performance, use Certified Datamax-O'Neil supplies

warranty ■ ■ ■

- Printer*: 1 year (including platen roller and installed options)
- Printhead*: 1 year or 1,000,000 inches whichever comes first
- Contact sales representative for extended warranty options

** when used with approved supplies*

barcodes/fonts/graphics ■ ■ ■

- Memory:
 - 2MB RAM / 4MB Flash
- Standard fonts:
 - 5.5CPI, 7.2CPI, 10.2 CPI, 10.7CPI, 18.5CPI, 20.4CPI, 22.6CPI & 34.0CPI (additional fonts available)
- Optional characters:
 - Arabic, Greek, Hebrew, OCRA, OCRB, Unicode subset including Latin & Thai
 - Asian (including Big 5, Simplified Chinese, Korean and Shift JIS) - additional international characters available
- Barcodes:
 - Linear: Codabar, Code 39, Code 93, Code 128, EAN-8, EAN13, Interleaved 2 of 5, MSI/Plessey, UCC/EAN-128, UPC-A, UPC-E
 - 2D Symbolologies: PDF417, AZTEC, QR, GS1, Datamatrix (available on wireless only)
- Graphics:
 - Supports storage of graphics/logos in Flash memory and transient "print once" graphics

software ■ ■ ■

- Protocol:
 - Line Printer Mode, Easy Print®
- Device management (for 802.11 models only):
 - Remote Management Software (RMS), Wavelink Avalanche MC, Motorola MSP
- Drivers:
 - Windows® CE and Desktop
- Compatible label design software:
 - NiceLabel, BarTender®, DP Designer
- Software development kit:
 - C++, Visual Basic, Java, Microsoft Dynamics, BlackBerry
- Device interface:
 - OPOS, JPOS

options ■ ■ ■

- Wireless communication - Bluetooth or 802.11b/g

agency approval ■ ■ ■

Contact sales for the most current approval list



Looking for a desktop label printer? Datamax-O'Neil manufactures an extensive selection of desktop label printers that are ideal for manufacturing, warehouse, healthcare, ticketing, postal services and RFID labeling requirements. Competitive custom and standard media products are also available for all your label, receipt and ticketing needs.



ISO 9001: 2000
CERTIFIED



datamax • o'neil

right by our customers.

A **DOVER** Company

www.datamax-oneil.com

Specifications subject to change without notice.
Copyright 2010, Datamax-O'Neil (rev. 20100505)