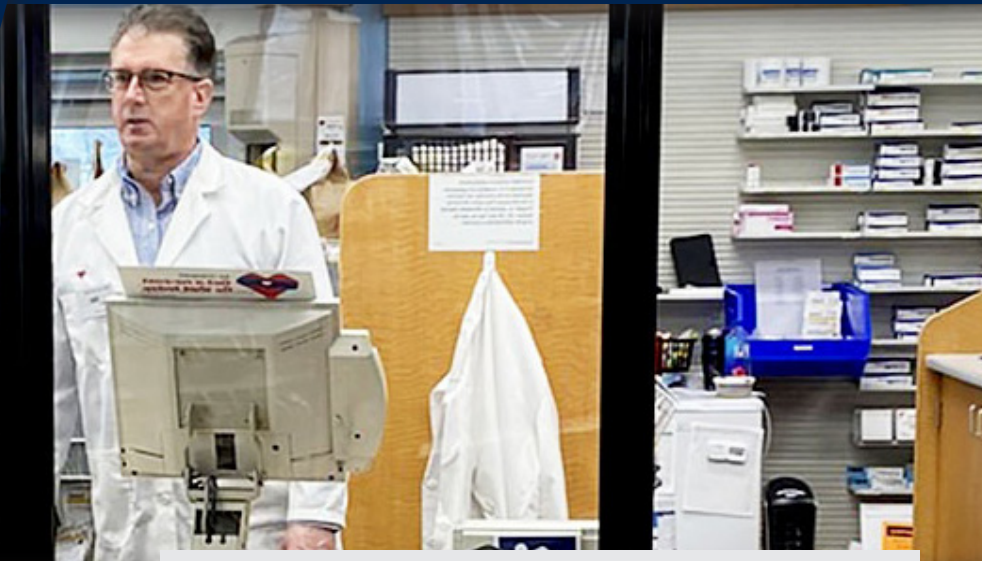


# The Medical Guardian™



APG CASH DRAWER®



## A Healthcare Solution for Reducing the Spread of Germs

### Medical Healthcare Countertop Screen

The medical Guardian™ is ideal for doctor clinics, dental and pharmacy settings and is built to help reduce the spread of infectious, airborne germs commonly spread by coughing or sneezing. Create a protective shield in any place of commerce that requires direct interaction between healthcare employees and patients in close proximity.

The polycarbonate countertop screen comes with options for the size and type of opening at the bottom, allowing for the transfer of items or payment for transactions. The medical Guardian™ reduces the risk of virus spread while allowing items to be exchanged at the checkout through a protective barrier.

- Overall three-panel dimensions: 3' - 3/4" x 6' 8"
- A sturdy, 'no-tip' solution that is portable and can fully collapse for storage
- Easily sanitized with any common disinfectant
- One year warranty
- Made in the USA



### Quality Guaranteed

Built from durable, clear polycarbonate with a solid aluminum frame to meet the requirements of healthcare business environments.



### Safer Interactions

Put your clinic customers at ease with a visible barrier that allows for face-to-face interaction while still maintaining separation of personal space.



### Protect Your Employees

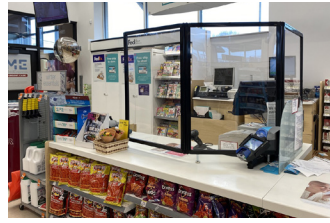
May help shield patients and healthcare employees from unintentional exposure to a sneeze or cough during transactions.



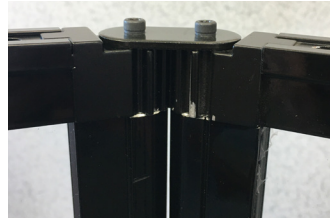
### Essential for Business

Ideal for essential medical businesses such as doctor clinics, dental, pharmacy and other healthcare facilities.

# APG's Guardian™ Countertop Shield



## Sturdy Construction, No Tip Solutions W/ Mounting Hardware Options



## Product Features

<b>Solid</b>	Aluminum frame and clear polycarbonate construction. Each panel is made of 2.5 mm thick polycarbonate.	<b>Safe</b>	Tri panel build helps to mitigate airborne contact from coughing, sneezing, laughing, etc.
<b>Portable</b>	Fully collapsible; panels 9 of the 3 panel units) stack onto one another at a depth of 3 inches.	<b>Dimensions</b>	<p><b>Tri-Panel Countertop:</b> 3ft-.75in tall x 2ft-2.75in wide, with a variable depth using included hardware of 1.75in - 2 .5in or 4.5in gap at base. Overall length when straightened is 6ft- 8in wide with 4 adjustable feet.</p> <p><b>Tri-Panel Countertop Opening:</b> The Tri-Panel window opening is 8.25in wide x 13.75in tall.</p> <p><b>Single Countertop Screen:</b> Each screen is 29in tall x 32.25in wide with a bottom open window of 6.5in x 30in.</p>
<b>Cleanable</b>	Able to be cleaned with wipes, bleach, or any common disinfectant.	<b>Sturdy</b>	<p>Each panel weighs 24 pounds, providing sturdiness so it is not easily tipped over. Additionally, temporary adhesive strips or glue can be added to hold the feet in place for added stability.</p> <p>Single panel has large feet on both sides that can be screwed to the countertop for added stability. Tri-panel also includes mounting hardware with screws for added stability.</p>
<b>Practical</b>	An opening at the bottom of the partition allows for the transfer of small items, papers, or payment for transactions. Feet risers allow cables for Credit/Debit to fit under the screen without additional check out modification.		
<b>Functional</b>	Barcodes can be scanned at checkout through the clear polycarbonate, preventing physical contact from transferring products.		

## Product Numbers

HS66910	Countertop Screen 6'6" x 3' Clear Polycarbonate Without Window with Adjustable Feet
HSW66915	Countertop Screen 6'6" x 3' Clear Polycarbonate W/ Window with Adjustable Feet
HSW32902	Countertop Single Screen 32.25" x 29" Clear Polycarbonate With 6.5" full length Window

## Contact Us



APG Cash Drawer, LLC  
5250 Industrial Blvd NE  
Minneapolis, MN 55421



+1 (763) 571-5000



sales@us.cashdrawer.com

(M-43-444) Rev. F  
© 2020 APG Cash Drawer, LLC